

Computational Methods for Analysis of Footwear Impression Evidence

Sargur Srihari

University at Buffalo, The State University of New York

Presentation Outline

- Background on Shoeprint Evidence
- Database Creation
- Problem Definition
- Computational Methods
- Performance

Background on Shoeprints

- Impression Evidence
- Most commonly found evidence at crime scenes
- Can be used to narrow-down search space
 - by matching print against a set of known shoeprints
- Manual identification is laborious
 - Hence seek automated methods

Types of Latent Shoe Prints

Positive print



Negative print



Research Databases

- 1 Positive Print database, each record has:
 - 1 Positive print
Simulating unknown print at crime scene
 - 2 Chemical print
Known print; sole on chemical paper
 - 3 Ground-truthed print
Segmented manually giving each pixel a label of either shoeprint or background
- 2 Shoe Patterns Database

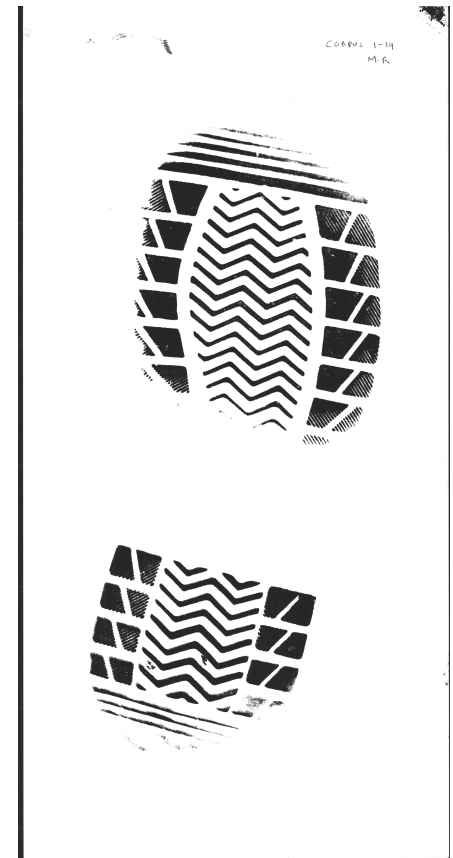
Positive Print Creation Process

- Step on powder and on carpet
- Photograph with scale
- Current image resolution (calculated using scale in image) is scaled to 100dpi



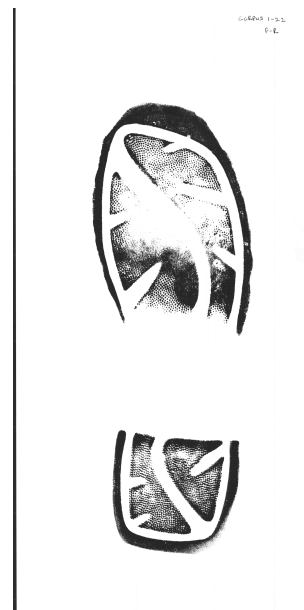
Chemical Print Creation Process

- Known print obtained by stepping on chemical pad and then on chemical paper
 - leaves clear print on paper
- Scanned into image of resolution 100dpi



Latent Print Database

- 45 latent and chemical print pairs
- Latent images are cut into pieces to form partial images



Computational Tasks

1. Matching Evidence Print to Known Prints
 - Generate from evidence a set of characteristics
 - A quantitative measure of the results of matching
2. Retrieve Closest Known Prints given Evidence
 - Determine size and brand

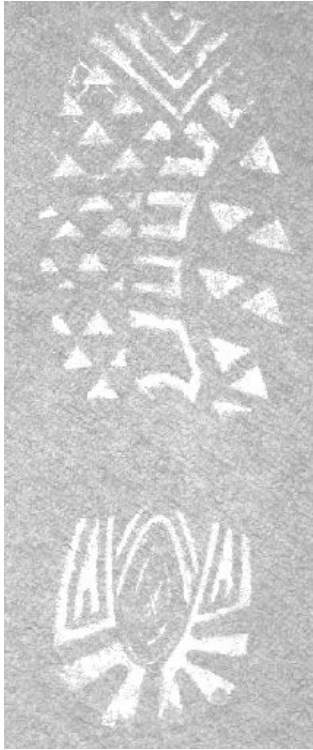
Extraction of Shoeprint (Segmentation)

- Critical step in identification
 - isolating the shoeprint foreground (impressions of the shoe) from the remaining elements (background and noise)
- Formulate problem as labeling regions as foreground (shoeprint) and background
 - Comparison of Otsu thresholding, CRF thresholding, and adaptive thresholding
- Given output of phase 1 and a chemical print
 - Find similarity between them

Adaptive Thresholding

- The threshold value for each individual pixel is selected based on the local neighborhood's range of pixel intensities.
- For all the neighboring pixels of a given pixel, the threshold value is calculated via mean, median, mean-C, etc. and used to determine whether that pixel is part of the foreground or background.

Segmentation Results



Latent Image



Hand Truthed
Image



Otsu



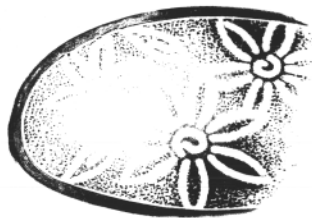
CRF Result



Adaptive
Thresholding

Preprocessing grayscale shoeprints

- A median filter is used to reduce “salt and pepper noise” while preserving edges.
- It works by sorting the pixel values within an $n \times n$ window centered at each pixel and selecting the median as the output. (n is an odd #)



(a) original image



(b) 3x3 median filter

Feature Extraction

- Features measure image characteristics at local, intermediate, and large scales
- Gradient features record local contour direction histograms.
- Structural features encode local structure.
- Concavity features are coarse global descriptors and are of 3 kinds: pixel density, large stroke, and concavity.

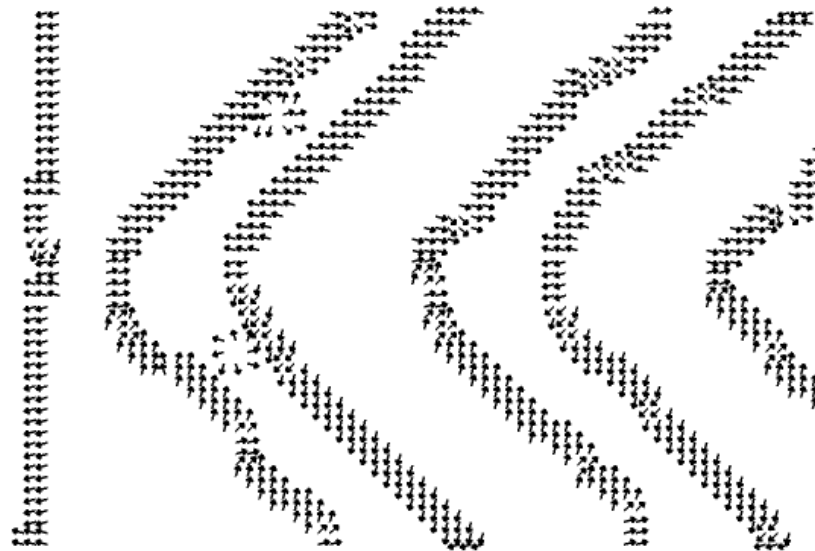
Process of Feature Extraction

- Convert grayscale image to binary image using Otsu global thresholding algorithm;
- Construct gradient map;
- Divide the entire image into 4×8 subregions;
- Take the histogram of 12 non-overlapping regions of gradient direction at all pixels within each subregion;
- Generate gradient feature vector (384 bits);
- Use 12 rules to extract structural feature (384 bits);
- Compute concavity features (256 bits).

Construct Gradient Map



(a) Original shoeprint



(b) Gradient Map of one subregion

Binary Vector Similarity Measure

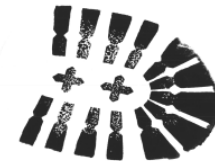
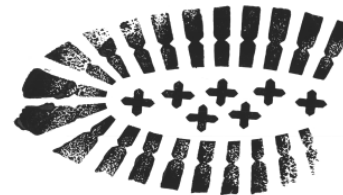
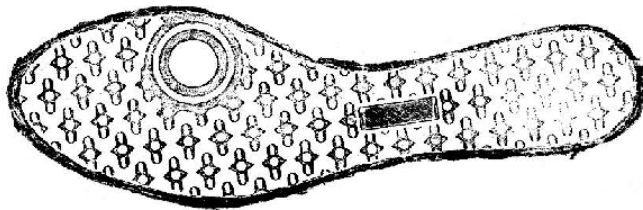
- Correlation similarity, range [-1,1]
- The similarity between 2 binary vectors X and Y , $S(X,Y)$ is calculated by

$$S(X,Y) = \frac{s_{11}s_{00} - s_{10}s_{01}}{((s_{10} + s_{11})(s_{01} + s_{00})(s_{11} + s_{01})(s_{00} + s_{10}))^{1/2}}$$

- s_{ij} --- the # of occurrences that X has an 'i' and Y has a 'j' at the corresponding positions;

Experiments and Results

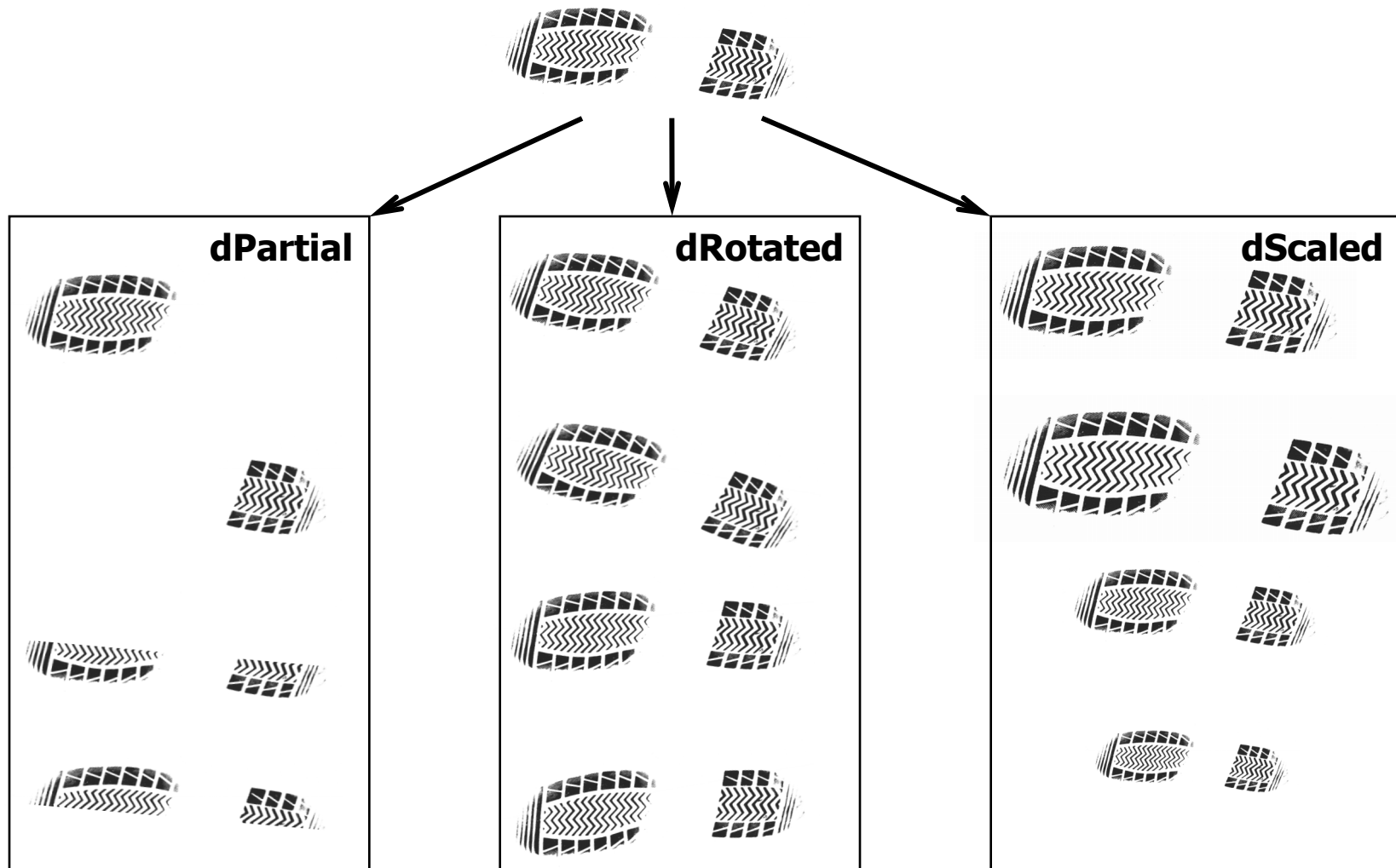
- Database consists of 304 grayscale images
 - 32 chemical shoeprints, plus
 - 272 shoeprints manually extracted from the Sample Reference Database provided in SICAR.
- All images rotated and resized to around 600x200 pixels for feature extraction purposes.



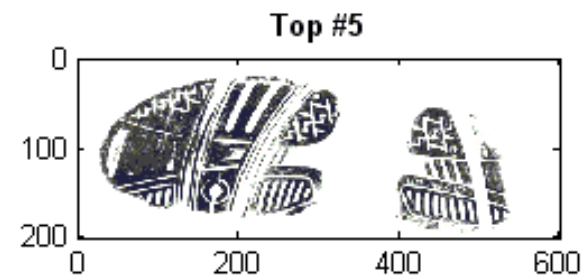
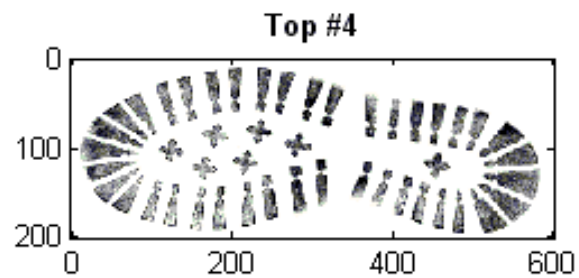
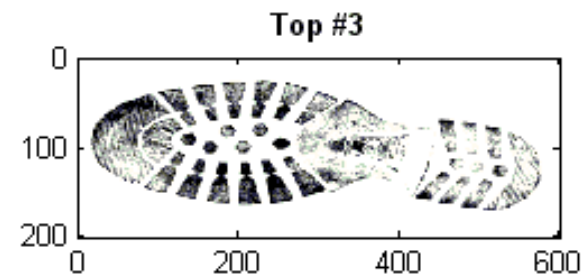
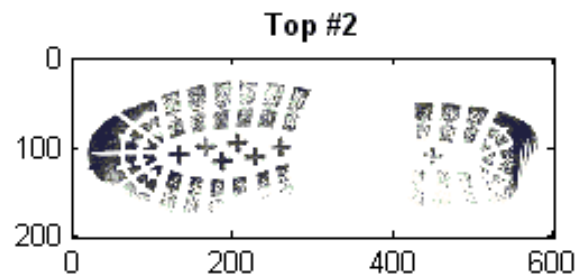
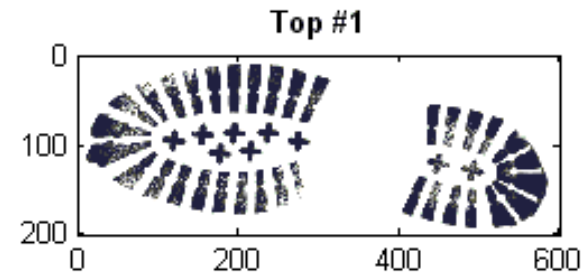
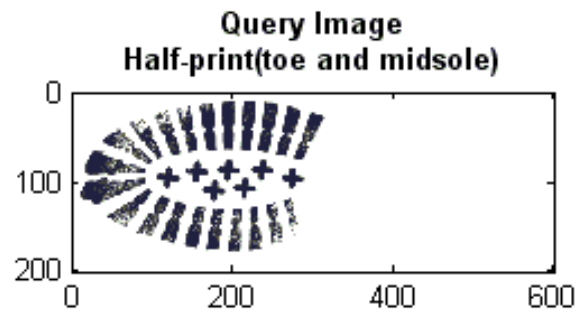
Query Sets and Evaluation Method

- Query image sets
 - Apply 3 types of transformations to 32 chemical prints and 32 SICAR database images to create 3 image sets: dPartial, dRotated, dScaled
 - Each transformation includes 4 sub-transformations.
 - Total # of query images is $(32+32) \times 3 \times 4 = 768$.
- Evaluation methodology
 - Query image is searched against database
 - Database is sorted according to similarity
 - Rank of the matching database shoeprint is recorded.

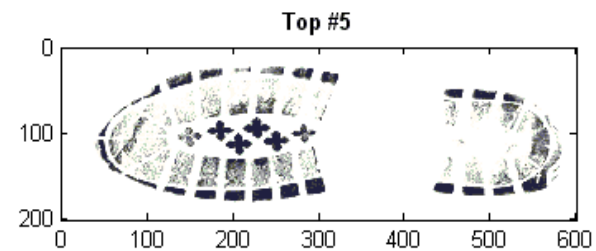
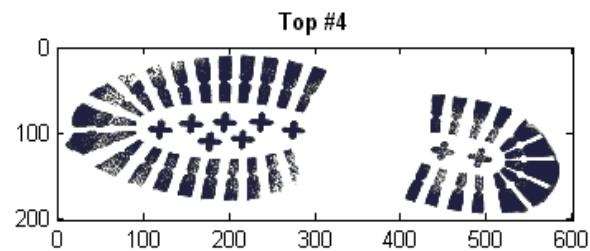
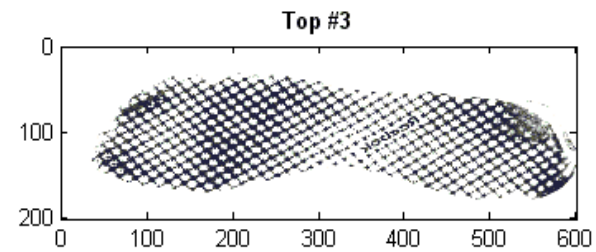
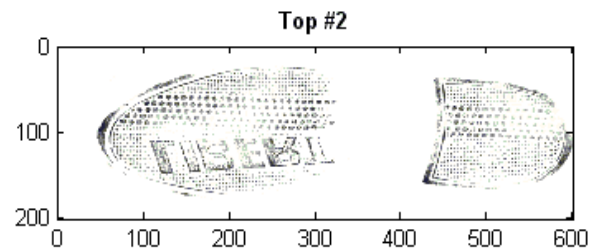
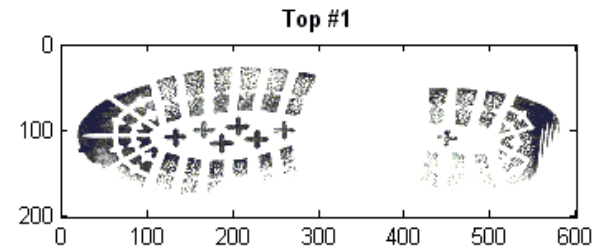
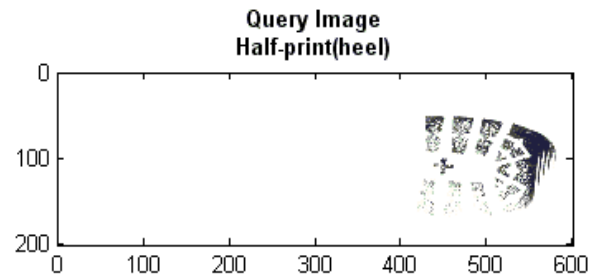
Three Types of Transformations



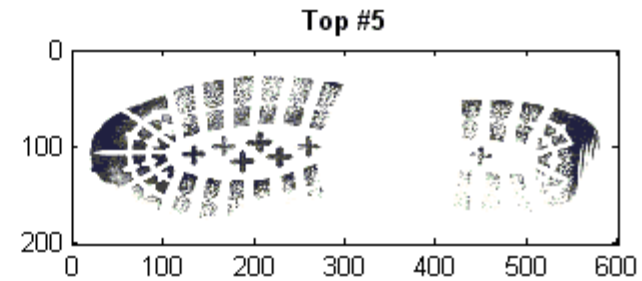
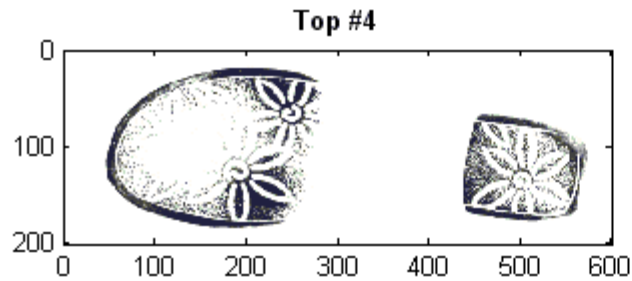
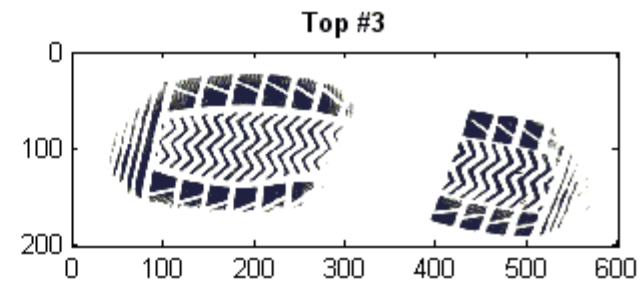
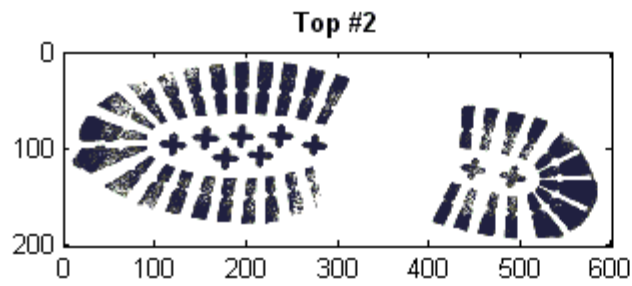
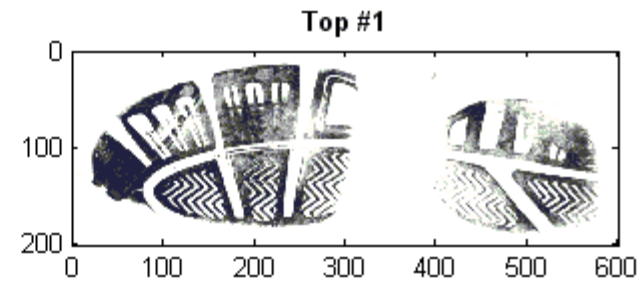
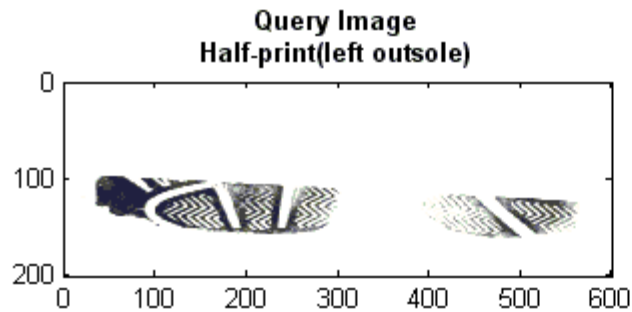
Query and Results



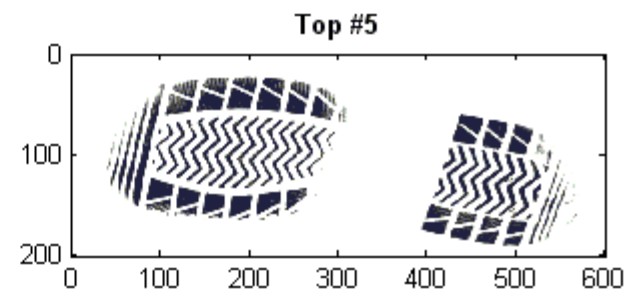
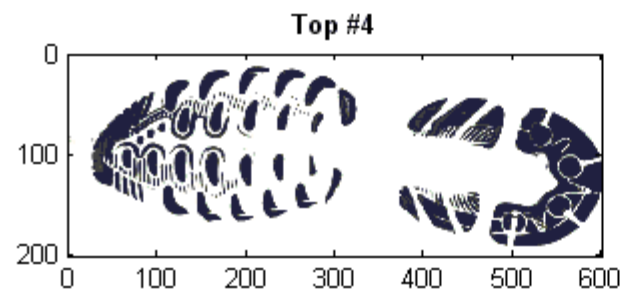
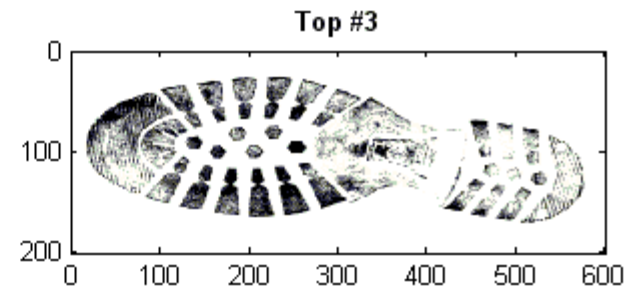
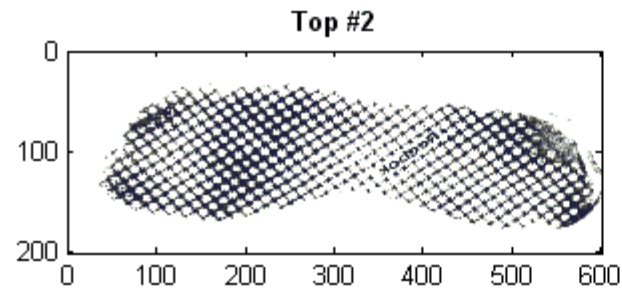
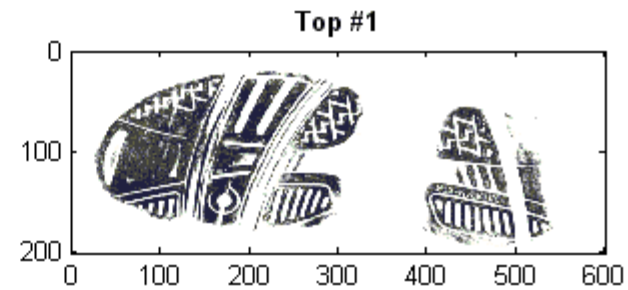
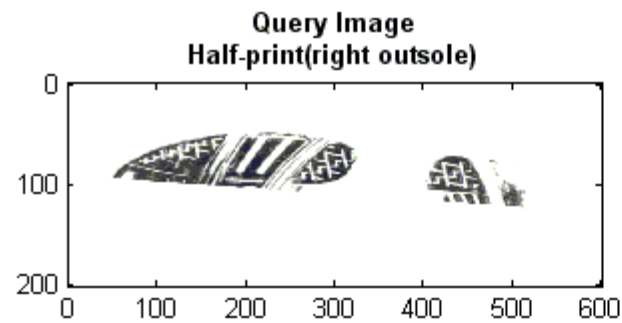
Query 2 and Results



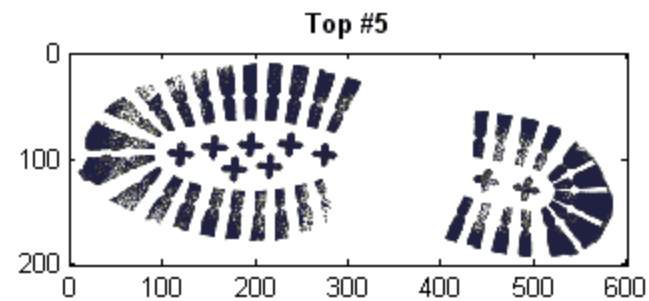
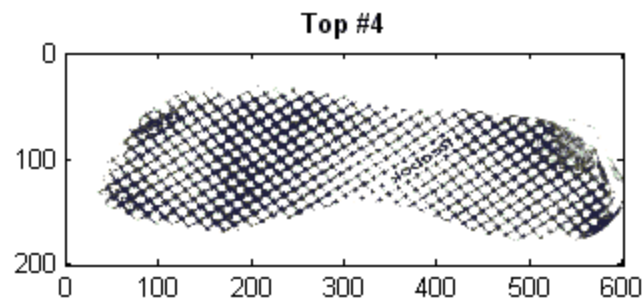
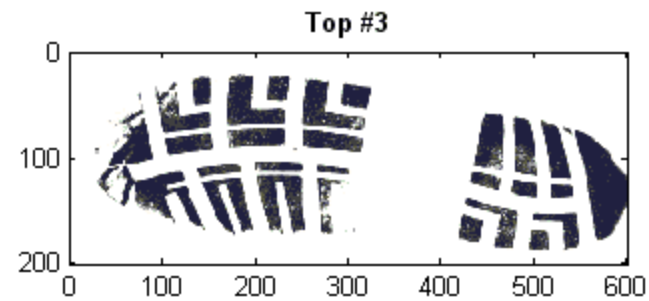
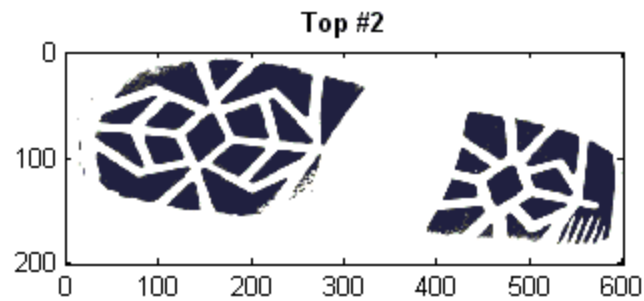
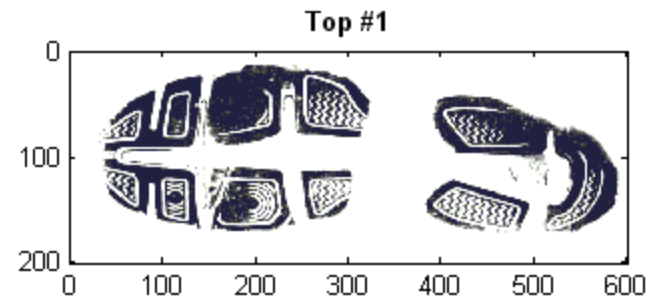
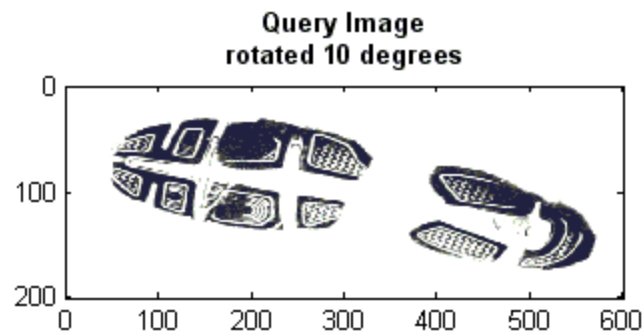
Query 3 and Results



Query 4 and Results

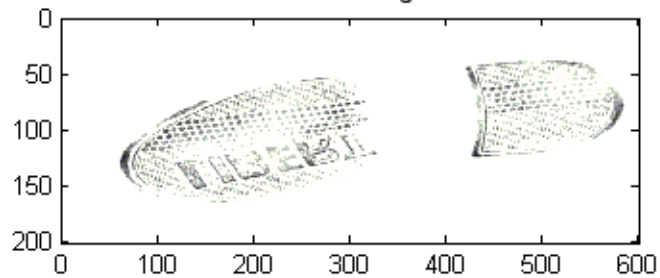


Query 5 and Results

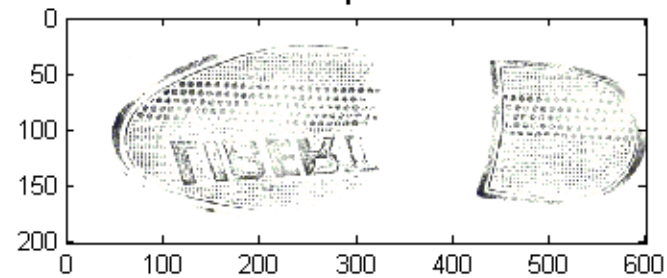


Query 6 and Results

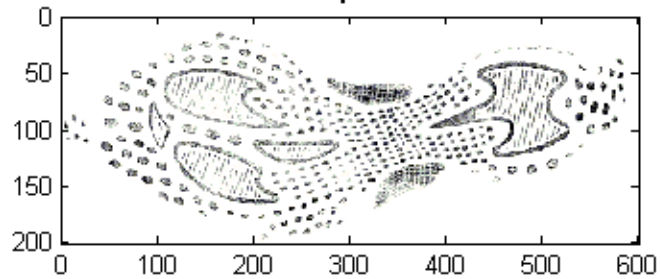
Query Image
rotated -10 degrees



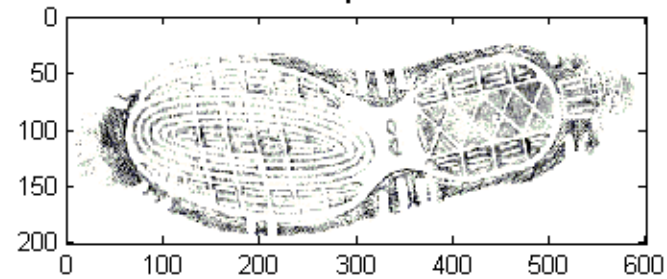
Top #1



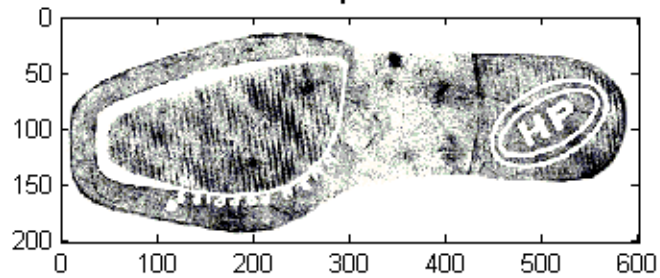
Top #2



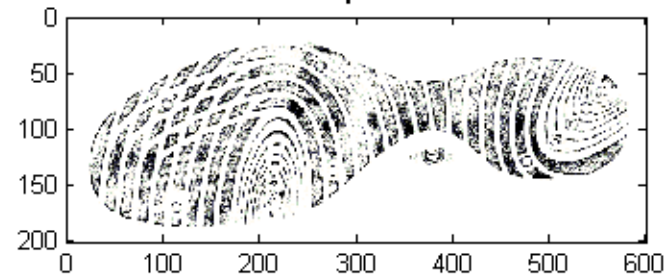
Top #3



Top #4



Top #5



Performance Metric

- Average Ranking
 - Average Ranking by transformation over all shoeprints: measuring robustness to different transformations
 - Average Ranking by shoeprint over all transformations

Performance of Retrieval Methods

(304 entries in database)

Transformation Category	Transformation Label	Average Ranking
Partial	p_1	1.0156
	p_2	2.0625
	p_3	1.0156
	p_4	1.1406
Rotation	r_1	1.1563
	r_2	4.3125
	r_3	1.0625
	r_4	3.4375
Rescaling	s_1	1.0156
	s_2	1.0469
	s_3	1.0000
	s_4	1.0000
Median		1.0547
Average		1.6055

Database for Shoeprint Retrieval

- Crawl Commercial Websites
- Retrieve shoeprint images

Commercial Data Set

- Data set size : 10, 442 shoes
- Size on Disk : 1.08 GB
- Every Shoe has a side image, cross angle image, sole image and its name.

Commercial Shoe Data



Timberland Urban Roll Top

Images source: www.zappos.com



Nike Tiempo Natural II TF

Images source: www.zappos.com



Converse All Star®; Leather Hi

Images source: www.zappos.com



Converse All Star
Leather Hi



Stacy Adams
Taggart



New Balance MF825MK



Hi-Tec V-Lite Typhoon II



Bacco Bucci
Hoover



Snipe Shoes 32436
(Mens)



PF Flyers Number 5



Rocky Mobilite

Images source: www.zappos.com

Search Data set preparation

- The shoe images downloaded from Zappos website are in rgb (color) format.
- These Images has to be converted to an equivalent chemical print format and indexed.

Indexing Images

- The process of indexing is to find various patterns existing in the set of images, map it to its respective images and extract features that would help in identification of these patterns in latent images.
- The colors in the sole is used to do the initial segmentation.

Color Segmentation



Original Image



C1



C2



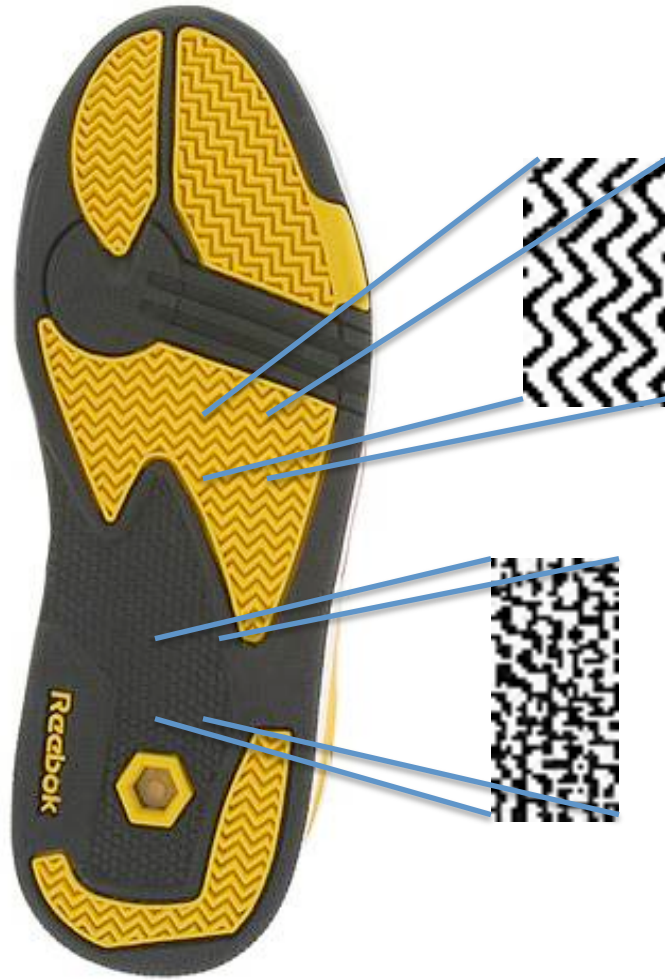
C4

Color Segmented Images

Pattern Extraction

- The patterns in each color regions are clustered to get a set of patterns.
- Every pattern in database is represented using its feature vector.
- The feature vector for a pattern is a vector of real numbers made up of edge orientation, intensity and Gabor filters.
- The patterns are shown in next slide

Pattern Image



Matching

- For each latent Image the probability of each pattern being present is calculated.
- These scores are compared with the index of the dataset to come up with a matching score.

Summary

- Shoeprint data bases is Downloaded
- Automatic Indexing of the data base is in progress
- Matching and Search Problems Formulated
- Solution to segmentation problem
 - Otsu thresholding performs better when foreground and background are clearly separable. Fails when the color mass is concentrated on a small area in the image histogram.
 - CRF method utilizes the neighborhood information and performs better than Otsu.

Future Work

- Segmentation Task
 - Combine techniques
 - When foreground/background grey-levels are apart and close
- Matching Task
 - Segmented image with chemical print
 - Partial Images
- Human Performance
 - In detection for partial and full latent images
- Shoe-Type identification
 - return best matches in commercial shoe database with latent as query