

Future Directions of Forensics: Bias and Statistics

Panel at

Impression and Pattern Evidence (IPE) Symposium

Tampa, FL, August 3, 2010

11:00-12:30pm



NAS Report (2009)

- Recommendation 5
- Research needed on human observer bias and sources of human error
 - to what extent the results of forensic analyses are influenced by knowledge regarding the background of the suspect and the investigator's theory of the case
 - sources of human error should be closely linked with quantifying and characterizing the amount of error

Madrid Bombing Case

Latent Fingerprint
on bag of detonator



Brandon Mayfield
American lawyer who
Converted to Islam
Identified by FBI



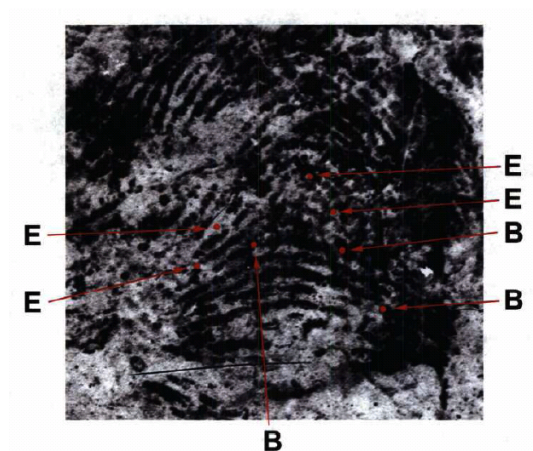
Algerian National
Daoud Ouhane
Identified by SNP



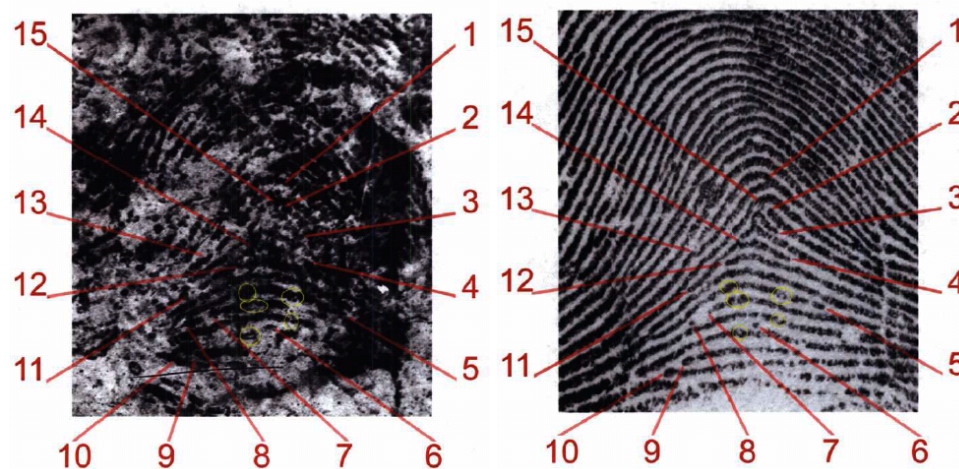
Individualization and Error Rate

- Courts allow Latent Print Examiner to opine on ultimate question of individualization
 - Evidence is attributed to a single individual and no other
- Three possible opinions for evidence
 - Individualizes
 - No other individual on earth
 - Inconclusive
 - Excludes
 - Definitely not this individual

Quantifying Uncertainty Avoids Error



Original IAFIS Encoding (LFP 17): level 2 details contain four ridge endings and three bifurcations



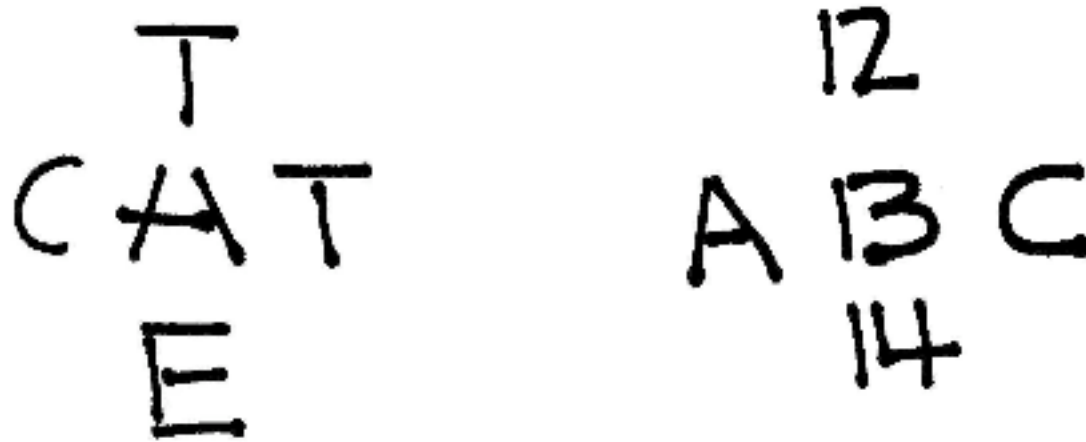
Charted enlargements: (a) the charted features on LFP 17, and (b) the corresponding features on Mayfield's inked fingerprint.

- The probability of at least one fingerprint in FBI IAFIS databases (470 million fingerprints) that shares the same minutiae is **0.93**.
- The probability of falsely identifying the source of LFP 17 is equal to **8×10^{-7}** .

Human versus Machine

- Saks&Koehler Vanderbilt Law Review 2008
“Individualization Fallacy of the Forensic Sciences” (p 200):
 - Risks of error due to individual differences in human experts' judgments of indistinguishability
- Best way to get such judgments not susceptible to human frailty, to context, to political motivations
 - Develop computational theories so that forensic decisions are as objective as possible
 - theories underlying judgments are open to inspection
 - (such theories would be expressed in the computer programs that make the judgments).

Human Observer Bias



- Interpretation of identical pattern differs based on context
- This is the strength of human cognitive ability
- Is it a liability in Forensic Science?