

Computational Methods for Analysis of Footwear Impression Evidence

Sargur Srihari and Veshnu Ramakrishnan

University at Buffalo, The State University of New York

Presentation Outline

- Background on Shoeprint Evidence
- Database Creation
- Problem Definition
- Computational Methods
- Performance

Background on Shoeprints

- Impression Evidence
- Most commonly found evidence at crime scenes
- Can be used to narrow-down search space
 - by matching print against a set of known shoeprints
- Manual identification is laborious
 - Hence seek automated methods

Types of Latent Shoe Prints

Positive print



Negative print



Research Databases

- 1 Positive Print database, each record has:
 - 1 Positive print
Simulating unknown print at crime scene
 - 2 Chemical print
Known print; sole on chemical paper
 - 3 Ground-truthed print
Segmented manually giving each pixel a label of either shoeprint or background
- 2 Shoe Patterns Database

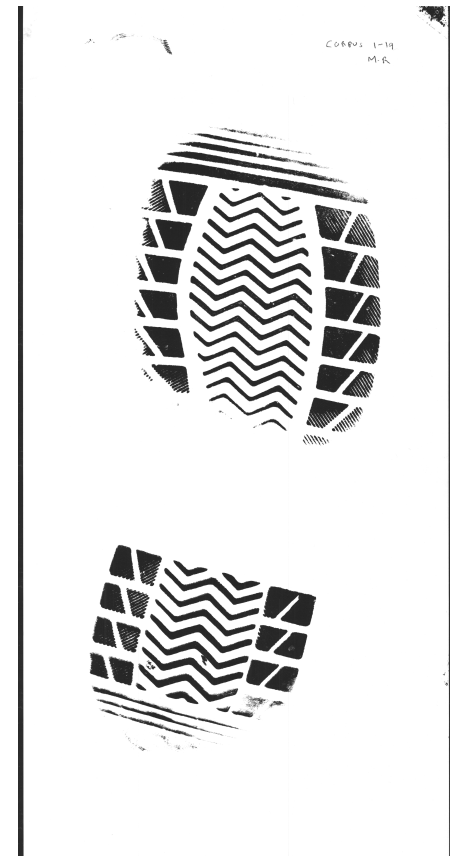
Positive Print Creation Process

- Step on powder and then on a carpet
- Photograph taken with scale near print
- Current image resolution is calculated using the scale in the image and then scaled to 100dpi



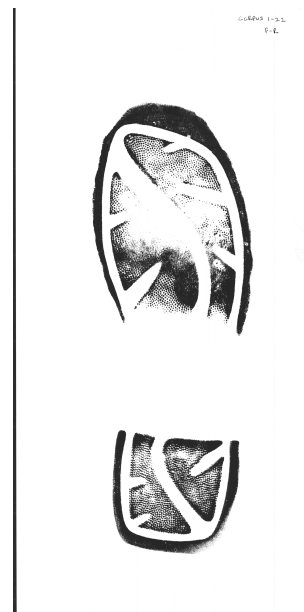
Chemical Print Creation Process

- Known print obtained by stomping on a chemical pad and then on a chemical paper
 - Which leaves clear print on paper
- Scanned into images of resolution 100dpi



Latent Print Database

- 45 latent and chemical print pairs
- Latent images are cut into pieces to form partial images



Computational Tasks

- 1. Matching Latent Prints to Known Prints
 - To develop a classification tool to generate from the evidence a set of characteristics e.g. gender, size and brand.
 - A quantitative measure of the results of matching
- 2. Retrieving matching shoes given a latent print

Extraction of Shoeprint (Segmentation)

- Critical step in identification
 - isolating the shoeprint foreground (impressions of the shoe) from the remaining elements (background and noise)
- Formulate problem as labeling regions as foreground (shoeprint) and background
 - Comparison of Otsu thresholding vs. CRF thresholding
- Given output of phase 1 and a chemical print
 - Find similarity between them

CRF Model

Probabilistic model

$$p(y | x, \theta) = \frac{e^{\Psi(y, x; \theta)}}{\sum_{y'} e^{\Psi(y', x; \theta)}}$$

where $y_i \in \{\text{Shoeprint, Background}\}$ and x : Observed image and θ : CRF model parameters.

$$\Psi(x, y; \theta) = \sum_{j=1}^m \left(A(j, y_j, x; \theta^s) + \sum_{(j,k) \in E} I(j, k, y_j, y_k, x; \theta^t) \right)$$

First term is state (or Association) potential

associates characteristics of patch with its corresponding label

Second term, captures neighbor/contextual dependencies by associating pair wise interaction of neighboring labels and observed data (or interaction potential).

Parameter Estimation

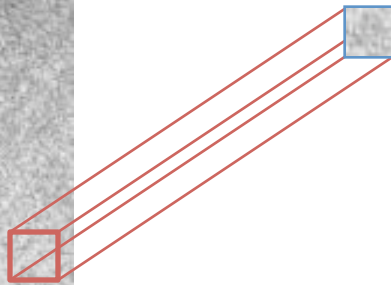
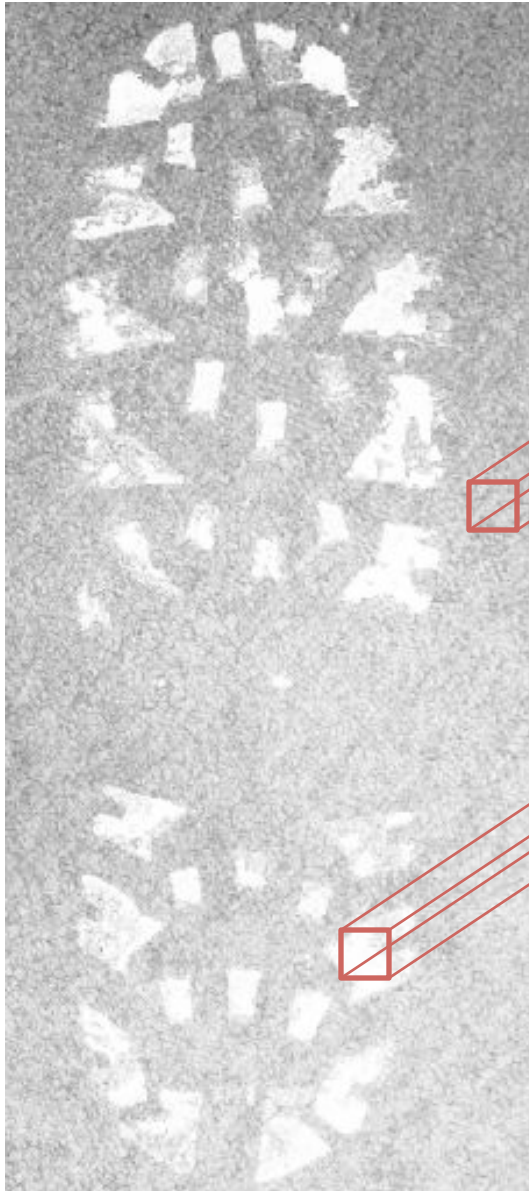
- Θ^s and θ^t are the parameters
- Estimated by maximizing the pseudo log-likelihood using gradient descent
- Pseudo log-likelihood (Markov Blanket)

$$\mathcal{L}(\theta) = \sum_{t=1}^M \left(\psi(y_t = a, x; \theta) - \log \sum_a e^{\psi(y_t=a, x; \theta)} \right)$$

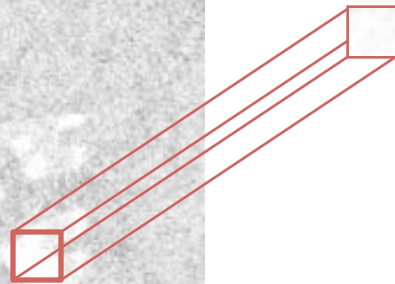
Features for Segmentation

- Texture: depends on background matrix
 - As generalization of the texture is difficult, we resort to user to provide texture samples of foreground and background
- Sample size is fixed to be 15X15 which is big enough to extract information and small enough to cover print region.
- Feature vectors are normalized image histograms
- State and transition features are computed

User Provided Samples



Background sample (15x15)



Foreground sample

Features

(Calculated for every patch in image)

- State Features

State Feature	Description
Entropy	Entropy of the patch
Standard Deviation	Standard deviation of the patch
Foreground Cosine Similarity	Cosine Similarity between the patch and the foreground sample
Background Cosine Similarity	Cosine Similarity between the patch and the background sample

- Transition Feature

- Cosine similarity between current patch and the surrounding 24 patches

Experiments and Results

- Segmentation is done using Otsu, Neural Network and Conditional Random Fields.
- Both Neural Network and Conditional Random Fields use the same feature set other than the transition feature.
- Training: 11 shoeprints, 320,000 3x3 patches
- Testing on 34 shoeprints

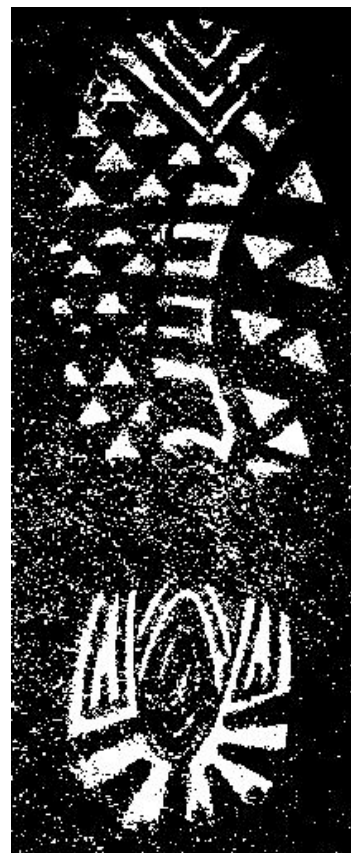
Segmentation Results



Latent Image



Hand Truthed
Image



Otsu



CRF Result



Latent Image



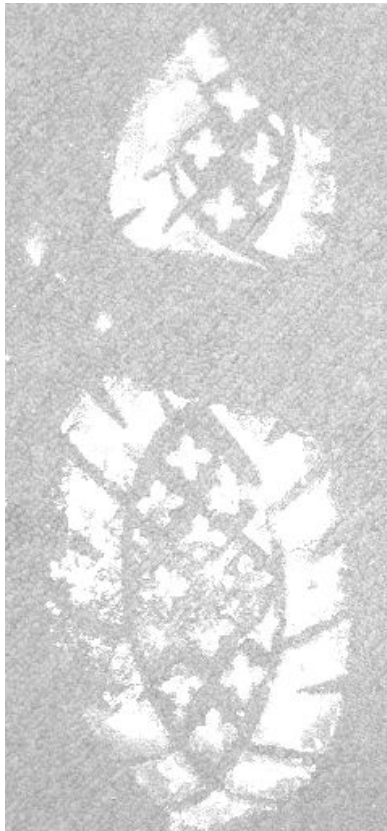
Hand Truthed
Image



Otsu



CRF Result



Latent Image



Hand Truthed
Image



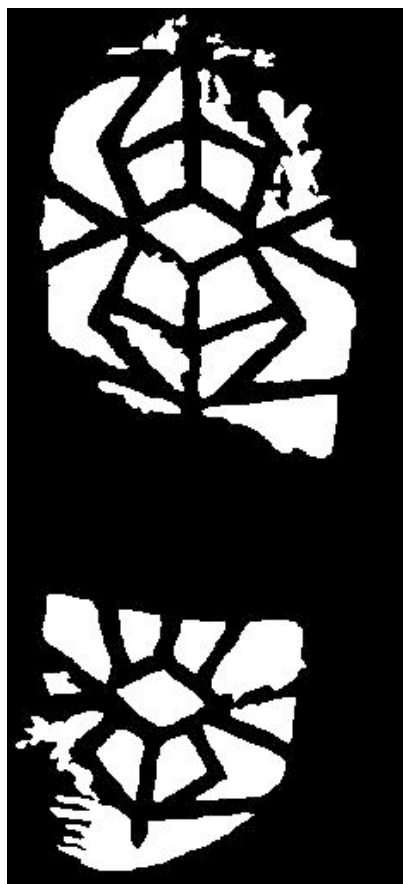
Otsu



CRF Result



Latent Image



Hand Truthed
Image



Otsu



CRF Result

Performance Metrics

- Precision
 - $\text{True Positive} / (\text{True Positive} + \text{False Positive})$
- Recall
 - $\text{True Positive} / (\text{True Positive} + \text{False Negative})$
- Where True Positive is defined as:
 - Patch which is foreground(shoeprint) correctly tagged as foreground

Performance of Segmentation Methods

Segmentation Method	Precision	Recall	F-Measure
Otsu	40.97	89.64	56.24
Neural Network	58.01	80.97	59.53
CRF	52.12	90.43	66.12

F-Measure

Harmonic mean of precision and recall
 $= 2 * P * R / (P + R)$

Database for Shoeprint Retrieval

- Crawl Commercial Websites
- Retrieve shoeprint images

Commercial Data Set

- Data set size : 10, 442 shoes
- Size on Disk : 1.08 GB
- Every Shoe has a side image, cross angle image, sole image and its name.

Commercial Shoe Data



Timberland Urban Roll Top

Images source: www.zappos.com



Nike Tiempo Natural II TF

Images source: www.zappos.com



Converse All Star®; Leather Hi

Images source: www.zappos.com



Converse All Star
Leather Hi



Stacy Adams
Taggart



New Balance MF825MK



Hi-Tec V-Lite Typhoon II



Bacco Bucci
Hoover



Snipe Shoes 32436
(Mens)



PF Flyers Number 5



Rocky Mobilite

Images source: www.zappos.com

Search Data set preparation

- The shoe images downloaded from Zappos website are in rgb (color) format.
- These Images has to be converted to an equivalent chemical print format and indexed.

Indexing Images

- The process of indexing is to find various patterns existing in the set of images, map it to its respective images and extract features that would help in identification of these patterns in latent images.
- The colors in the sole is used to do the initial segmentation.

Color Segmentation



Original Image



C1



C2



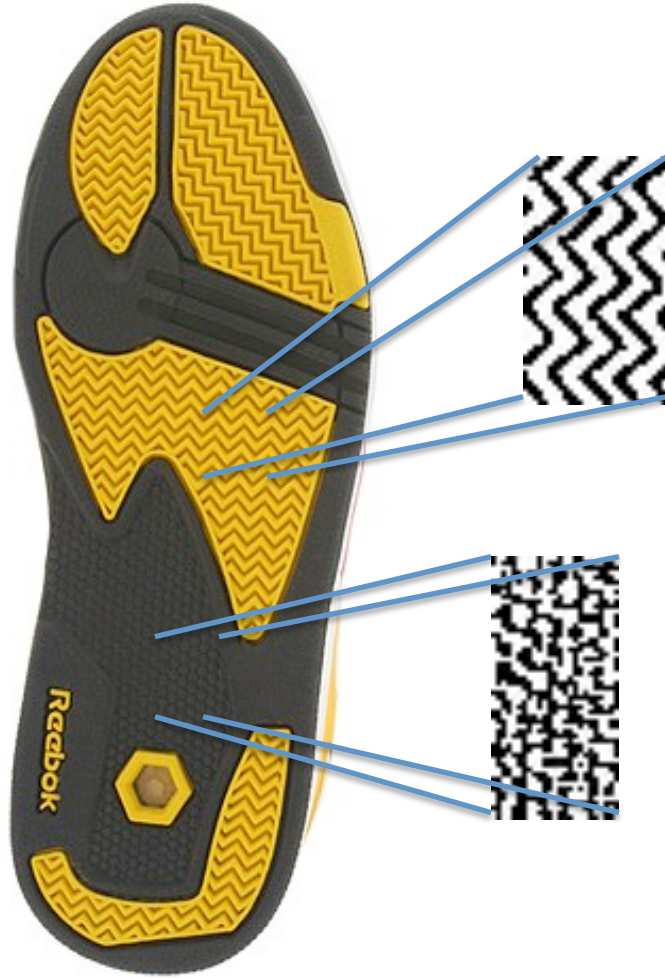
C4

Color Segmented Images

Pattern Extraction

- The patterns in each color regions are clustered to get a set of patterns.
- Every pattern in database is represented using its feature vector.
- The feature vector for a pattern is a vector of real numbers made up of edge orientation, intensity and Gabor filters.
- The patterns are shown in next slide

Pattern Image



Matching

- For each latent Image the probability of each pattern being present is calculated.
- These scores are compared with the index of the dataset to come up with a matching score.

Summary

- Shoeprint data bases is Downloaded
- Automatic Indexing of the data base is in progress
- Matching and Search Problems Formulated
- Solution to segmentation problem
 - Otsu thresholding performs better when foreground and background are clearly separable. Fails when the color mass is concentrated on a small area in the image histogram.
 - CRF method utilizes the neighborhood information and performs better than Otsu.

Future Work

- Segmentation Task
 - Combine techniques
 - When foreground/background grey-levels are apart and close
- Matching Task
 - Segmented image with chemical print
 - Partial Images
- Human Performance
 - In detection for partial and full latent images
- Shoe-Type identification
 - return best matches in commercial shoe database with latent as query